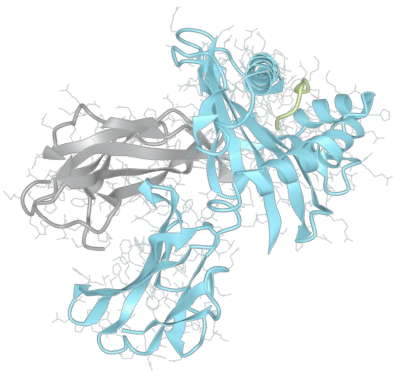


Product datasheet

sHLA-B*40:06bio

B*4006, B4006, B*40, B40, B61



| | |
|-------------------------|------------|
| Serological Name | B61 |
| Peptide Load | Endogenous |
| Modification | Unmodified |
| Conjugation | Biotin |
| SKU | B4006bio |

Product Description

| | |
|--|-------------------------------|
| Allele Name | B*40:06 B2m |
| HLA Class | HLA Class I |
| HLA Gene Locus | HLA-B |
| Alternative Allele Name A Chain | B*4006, B4006, B*40, B40, B61 |
| Alternative Allele Name B Chain | - |

Description Recombinant, truncated Class I soluble Human Leukocyte Antigen (sHLA), naturally folded and glycosylated, loaded with endogenous peptides.

| | |
|--|---------|
| Serological Name | B61 |
| Serological Split | B40 |
| Bw4/Bw6 Assignment | Bw6 |
| Bw4/Bw6 Sequence | SLRNLRG |
| Allele Frequency [World Population] | |
| A chain | 2.1% |
| B chain | - |

Associated products

[B4006](#)
[B4006pe](#)

Product Specification

| | |
|------------------------------------|--|
| Product name | HLA-B*40:06bio |
| HLA Species | Human |
| Host Cell Line Species | Human |
| Clone Designation | G10C5 |
| Tail Specification | VLDL |
| Peptide Load | Endogenous |
| Modification | Unmodified |
| Conjugation | Biotin |
| Complexity | Monomer |
| Protein Format | Recombinant, truncated, soluble, non-modified, biotinylated, endogenously loaded |
| Storage Temperature | 4 °C (This product should be stored undiluted) |
| Form | Liquid |
| Concentration | 300.0 µg/µl |
| Formulation | PBS/0.02% Sodium Azide |
| pH | 7.4 |
| Purification Method | Affinity Chromatography |
| Grade | Research Use Only [RUO] |
| Authentication Verification | Sequence Based Typing |

Protein Sequences

| | |
|-----------------------------|---|
| Alpha Chain Sequence | GSHSMRYFHT SVSRPGRGEP RFITVGYVDD TLFVRFDSDA TSPRKEPRAP WIEQEGPEYW DRETQISKTN TQTYRESLRN LRGYYNQSEA GSHTWQTMYG CDVGPDRLL RGHNQYAYDG KDYIALNEDL RSWTAADTAA QITQRKWEAA RVAEQLRAYL EGECVEWLRRL YLENGKETLQ RADPPKTHVT HHPISDHEAT LRCWALGFYP AEITLTWQRD GEDQTQDTEL VETRPAGDRD FQKWAAVVVP SGEEQRYTCH VQHEGLPKPL TLRVSVSTDD DLA |
| Beta Chain Sequence | IQRTPKIQVY SRHPAENGKS NFLNCYVSGF HPSDIEVDLL KNGERIEKVE HSDLSFSKDW SFYLLYYTEF TPTEKDEYAC RVNHVTLSPQ KIVKWDRDM |

Related Products

[B4001bio](#)
[B4002bio](#)
[A0201bio](#)
[B0702bio](#)

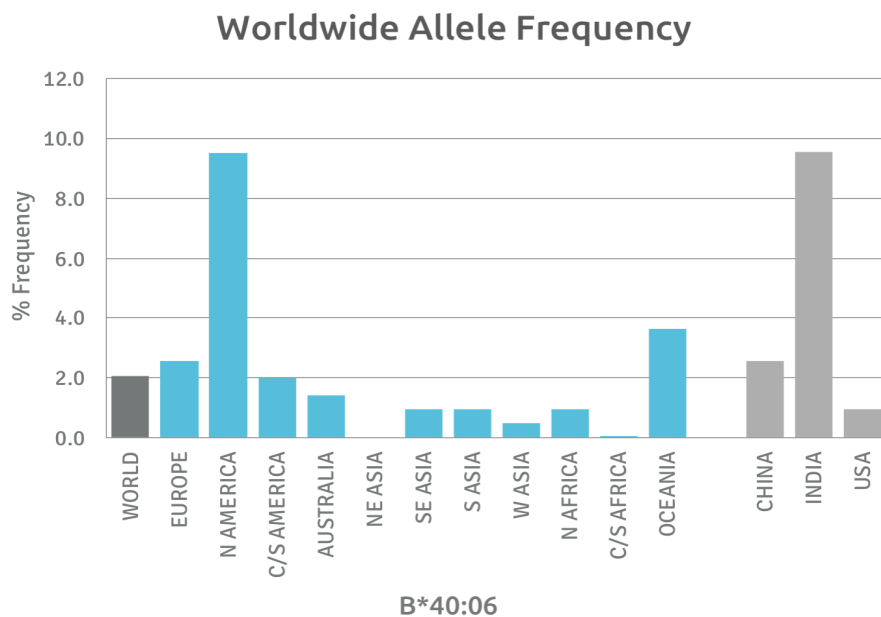
Applications

HLA Sandwich ELISAs
HLA Direct ELISAs
HLA-Sera Antibody Assays
HLA Controls in ELISA Assays
HLA Assay Standards
HLA Blocking Assays
HLA Neutralizing Assays
HLA Competition Assays
HLA Bead Assays
HLA Immunization Procedures

Recommended Antibodies

W6/32
Anti-B2m

Allele Frequency



Please note:

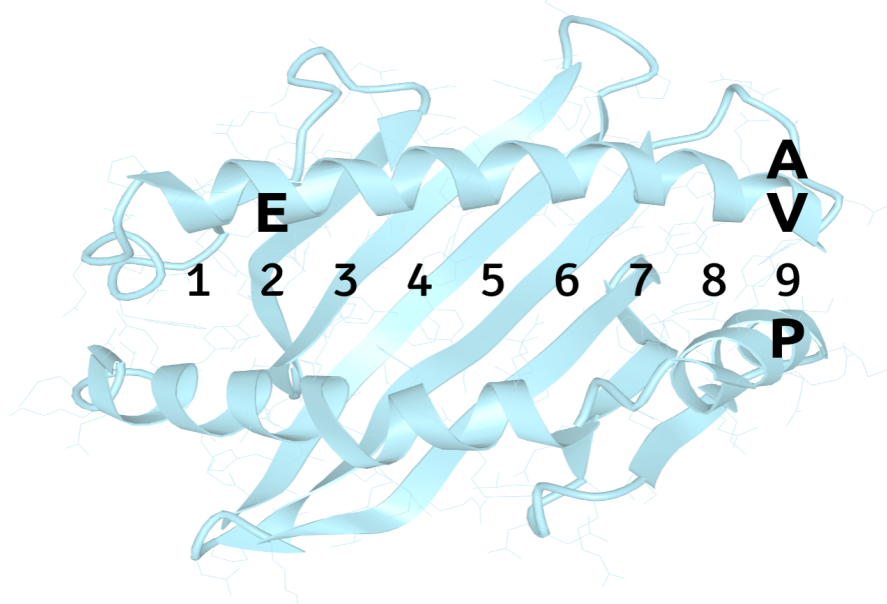
ALL PRODUCTS ARE FOR RESEARCH USE ONLY. NOT FOR COMMERCIAL USE IN DIAGNOSTIC PROCEDURES.
For more information, please visit our Policies section on our website. For licensing inquiries, please contact

licensing@hlaprotein.com

 HLA Protein
PURE PROTEIN, LLC

Motif

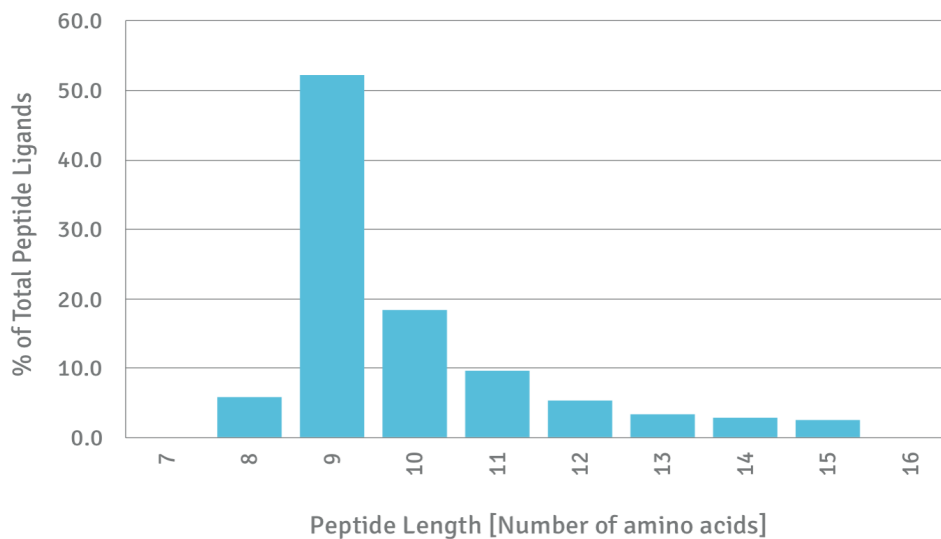
B*40:06 BINDING MOTIF



Length Distribution

HLA Length Distribution

B*40:06



Please note:

ALL PRODUCTS ARE FOR RESEARCH USE ONLY. NOT FOR COMMERCIAL USE IN DIAGNOSTIC PROCEDURES.

For more information, please visit our Policies section on our website. For licensing inquiries, please contact

licensing@hlaprotein.com

